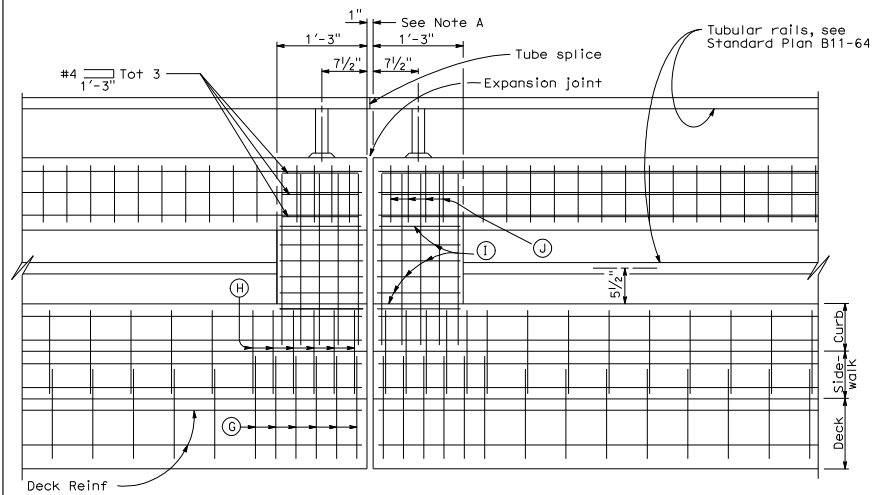
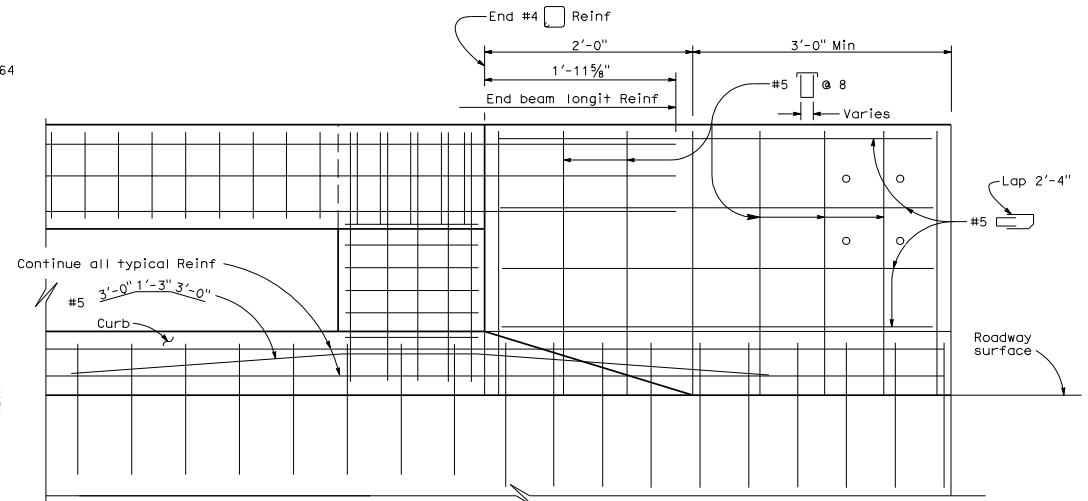


LONGITUDINAL SECTION



EXPANSION JOINT DETAIL



END SECTION  
(Hand railing not shown)

- Ⓒ #6 Tot 6 @ 4 each side of expansion joint
- Ⓓ #6 Tot 6 @ 4 each side of expansion joint
- Ⓘ #4 Tot 6 per post
- ⓵ #4 Tot 4 per post

DIST	COUNTY	ROUTE	POST MILES TOTAL PROJECT	SHEET NO.	TOTAL SHEETS

REGISTERED CIVIL ENGINEER

REGISTERED PROFESSIONAL ENGINEER

May 1, 2006  
PLANS APPROVAL DATE

Tillot Satter  
No. C42892  
Exp. 03-31-08  
CIVIL  
STATE OF CALIFORNIA

The State of California or its officers or agents shall not be responsible for the accuracy or completeness of electronic copies of this plan sheet.

To get to the Caltrans web site, go to <http://www.dot.ca.gov>

NOTES:

- A. Expansion joint to match deck joint.
- B. Continue A, B, C, and #4 longitudinal reinforcing. See Type 80SW typical section on Standard Plan B11-62.
- C. Post to be spaced equally, typically 6'-8" spacing. Post spacing may be reduced where location of hinges or expansion joints or the length of wingwalls will not accommodate the 6'-8" spacing. Maximum see-through availability is to be strived for, where 6'-8" post spacing can not be achieved.

STATE OF CALIFORNIA  
DEPARTMENT OF TRANSPORTATION  
**CONCRETE BARRIER  
TYPE 80SW  
(SHEET 2 OF 3)**  
NO SCALE

**B11-63**